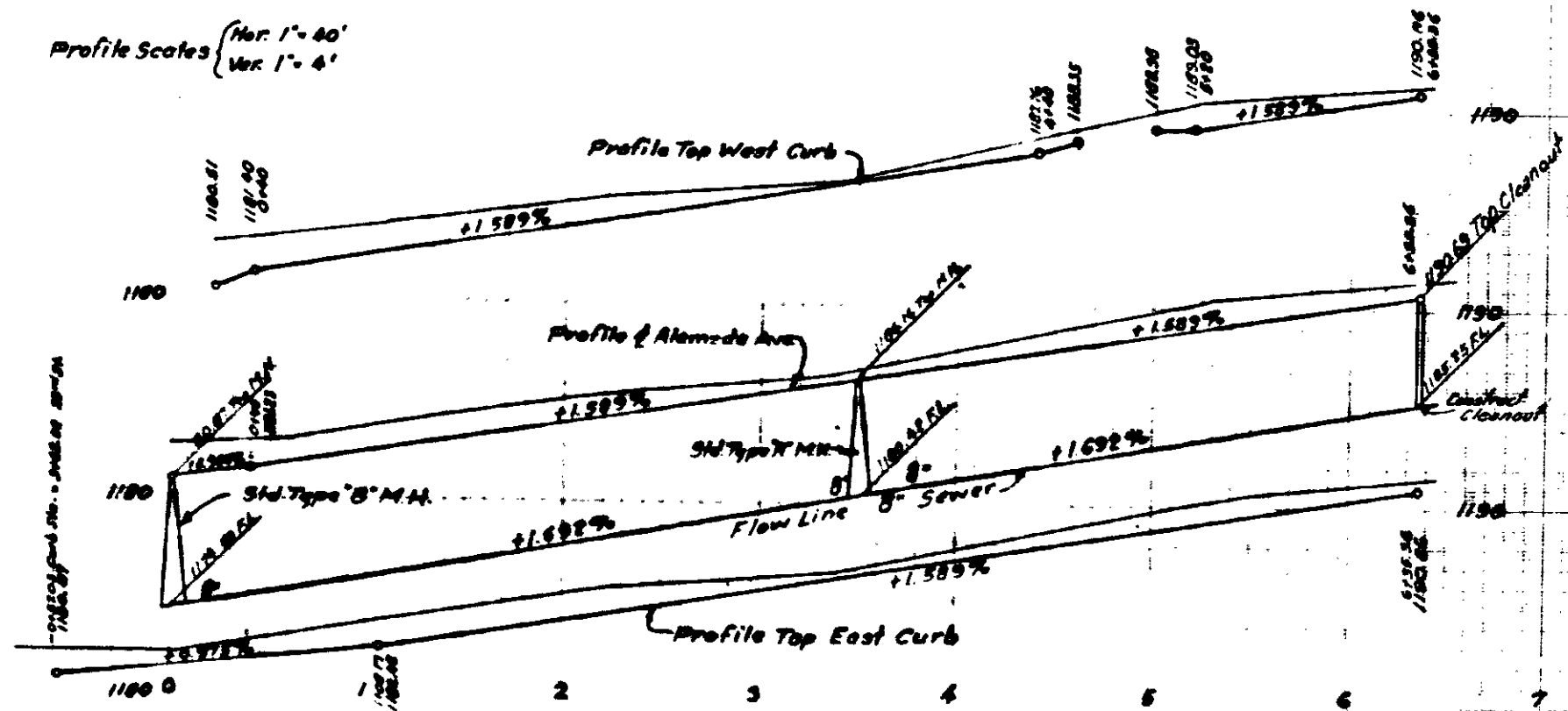
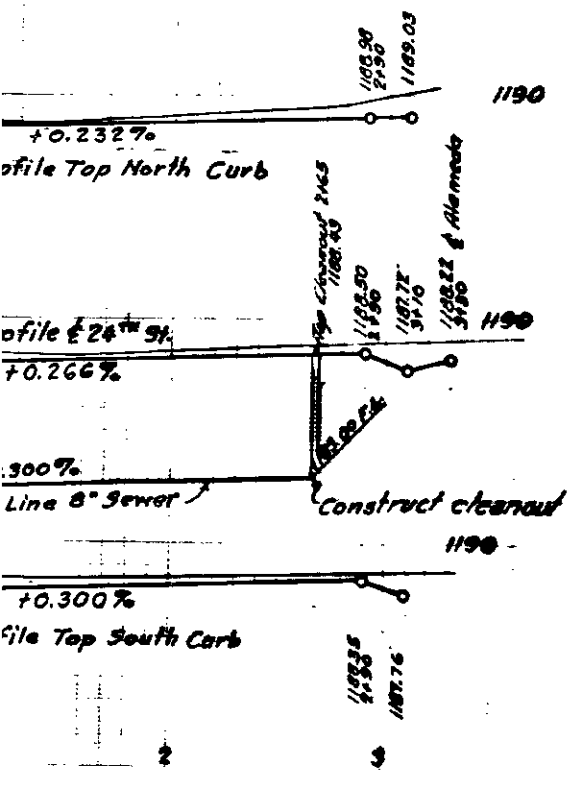


STREET

ALAMEDA AVENUE

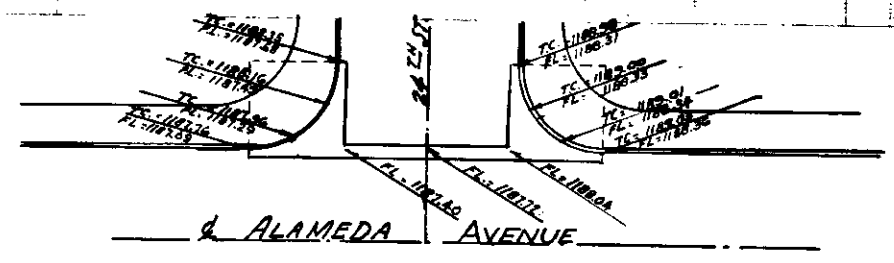
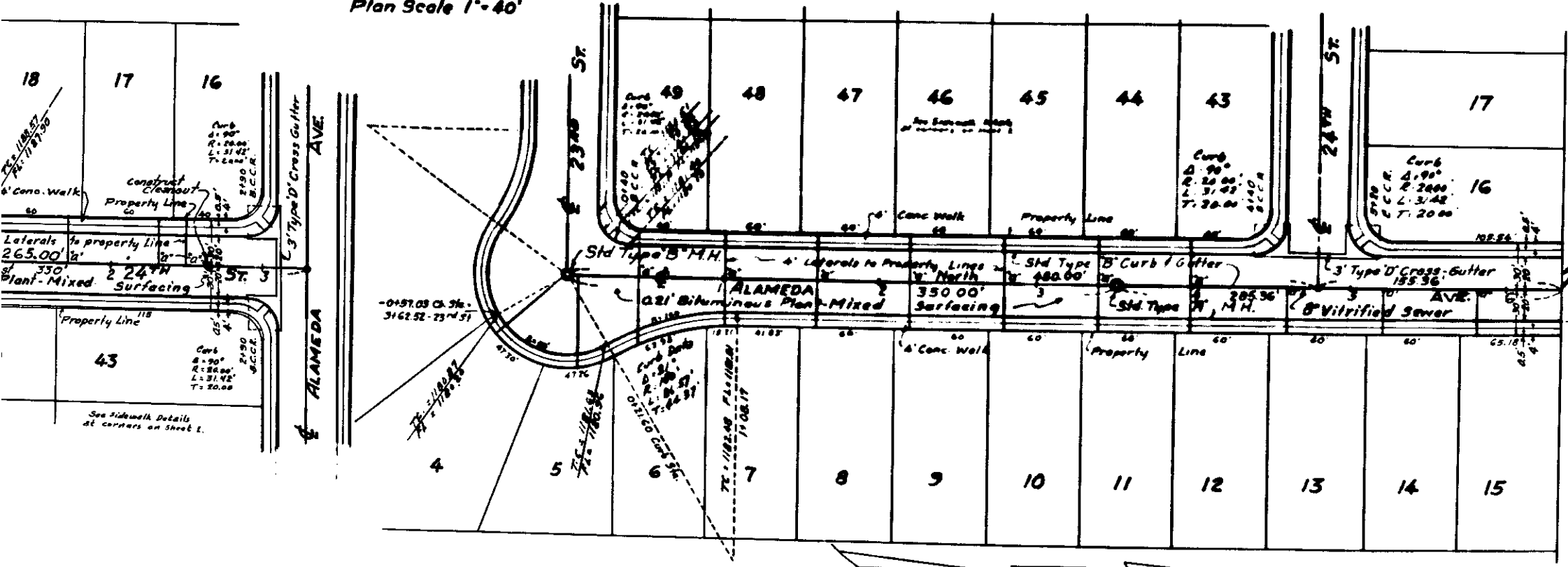
Profile Scales
Hor. 1" = 40'
Ver. 1" = 4'



BENCH MARK
R.R. Spike & 27th St. & Golden Ave.
Elev. 1203.00 City Datum

Note:
All work embodied on these plans shall be done in conformity with the applicable provisions of specifications No. 2027.
For Typical Cross-Section See Sheet 2.

Plan Scale 1" = 40'



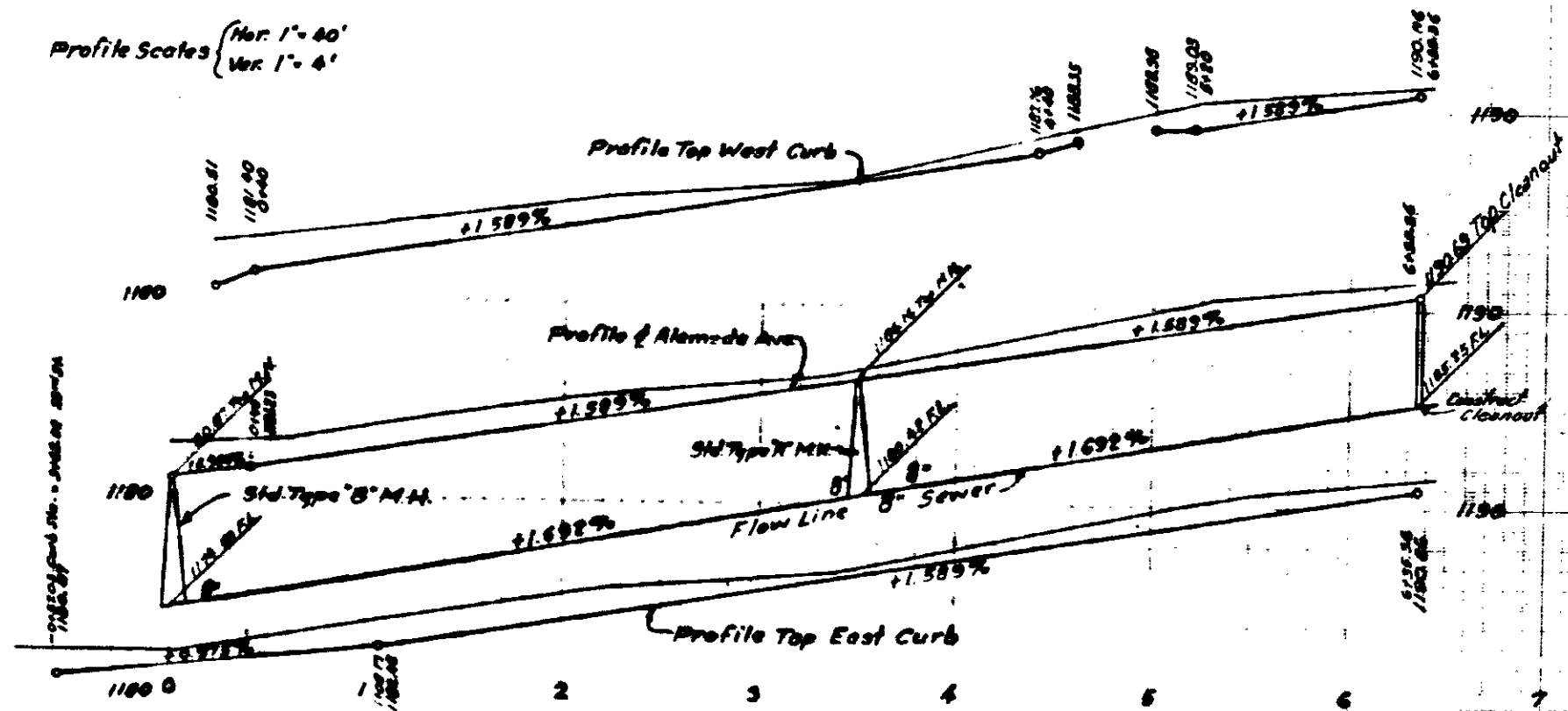
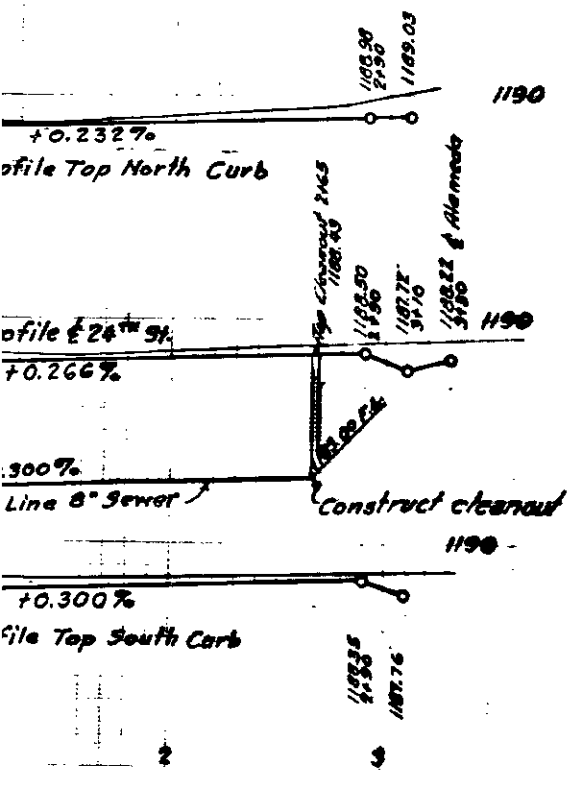
Curb & Gutter Details
24th and ALAMEDA AVENUE
Scale 1 inch = 20'

DEPARTMENT OF ENGINEERING		CITY OF SAN BERNARDINO	
IMPROVEMENT PLANS - TRACT 4180.			
24th STREET			
ALAMEDA AVENUE			
WENDELL H. ANNON, CIVIL ENGINEER			
SUBMITTED BY	Wendell H. Annon, C.E.	REFERENCE	DRAWING NO.
APPROVED	Sept 25 1928	DRAWN BY	2136
CITY ENGINEER		CHECKED BY	SHEET 3
REGISTERED CITY ENGINEER NO. 2066			OF 3 SHEETS

STREET

ALAMEDA AVENUE

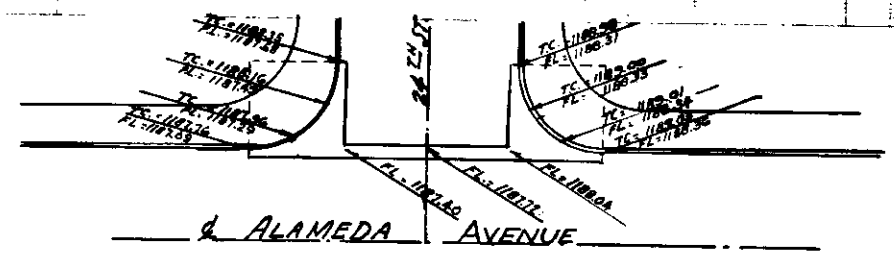
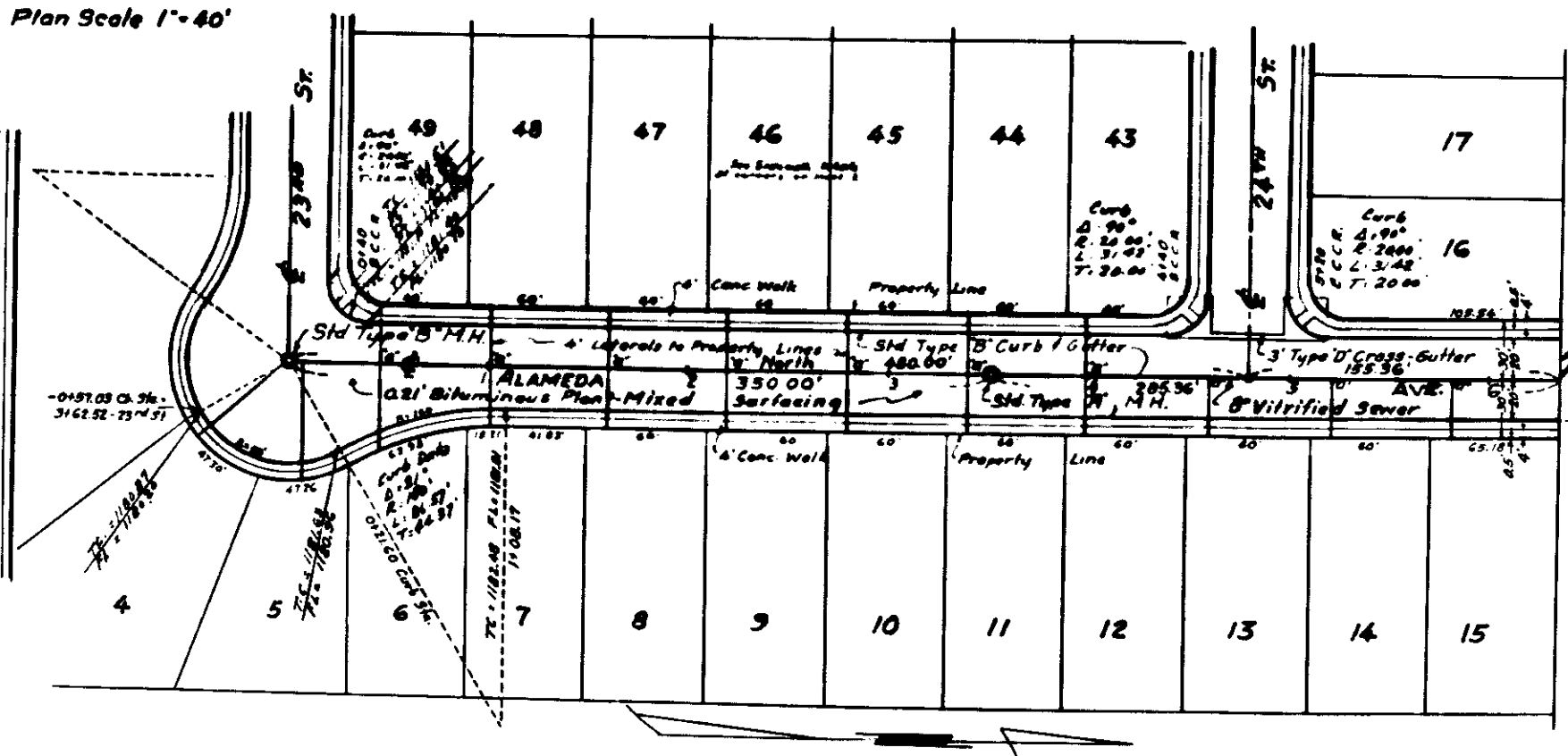
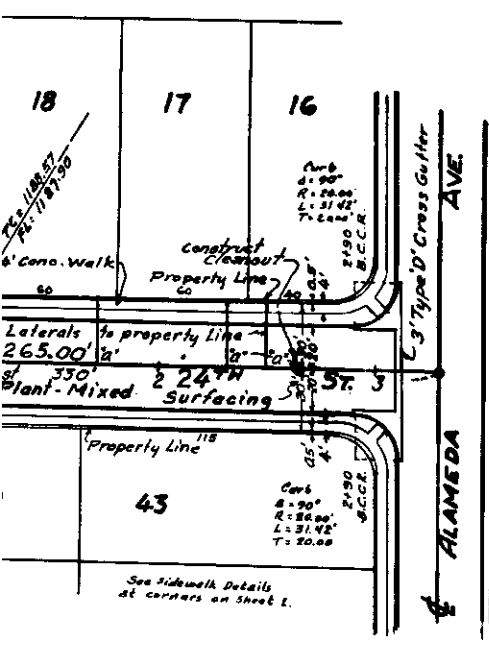
Profile Scales
Hor. 1" = 40'
Ver. 1" = 4'



BENCH MARK
R.R. Spike & 27th St. & Golden Ave.
Elev. 1203.00 City Datum

Note:
"All work embodied on these plans shall be done in conformity with the applicable provisions of specifications No. 2027."
For Typical Cross-Section See Sheet 2.

Plan Scale 1" = 40'



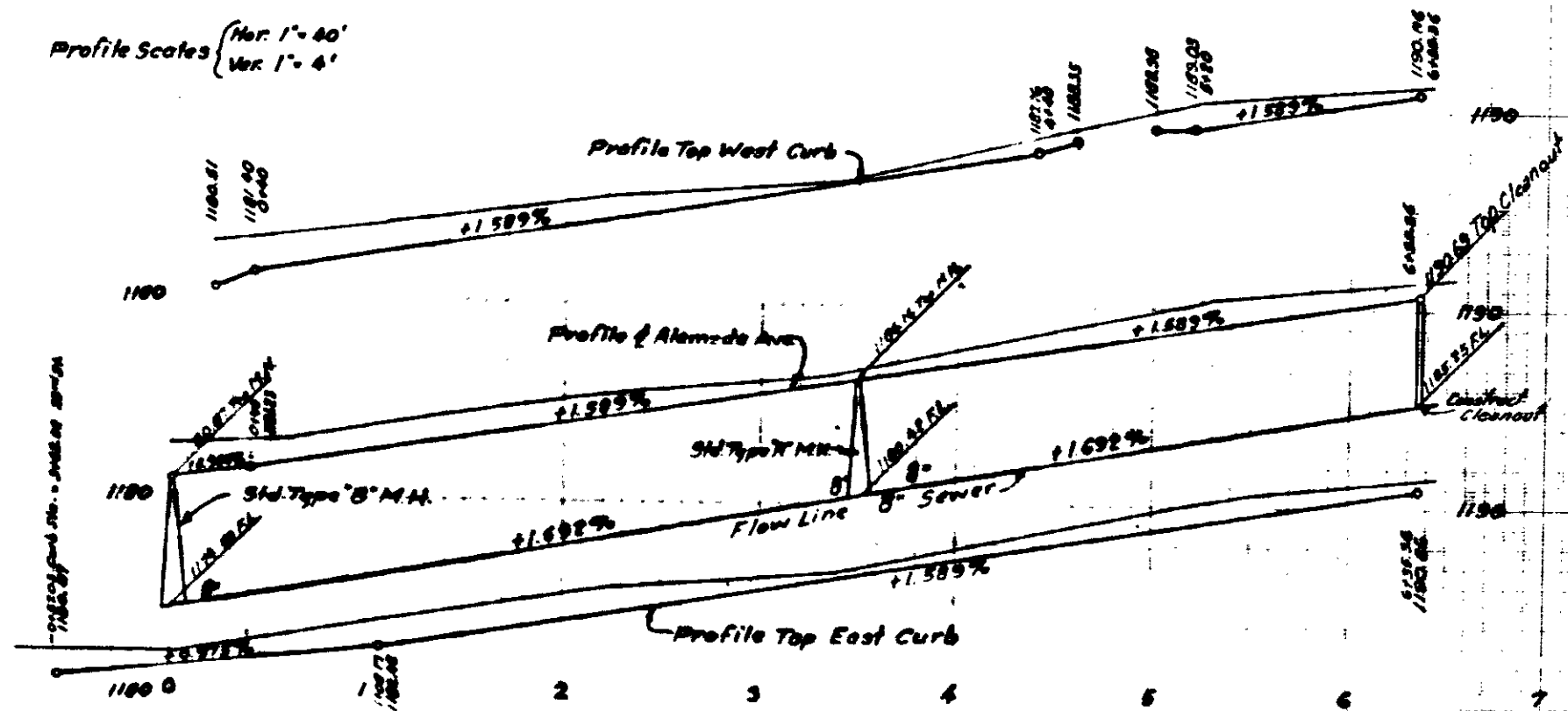
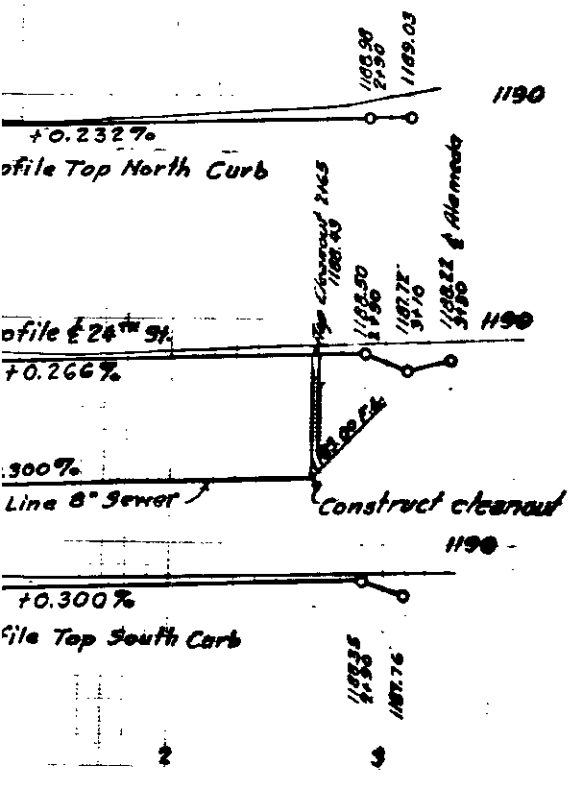
Curb & Gutter Details
24th and ALAMEDA AVENUE
Scale 1 inch = 20'

DEPARTMENT OF ENGINEERING		CITY OF SAN BERNARDINO	
IMPROVEMENT PLANS - TRACT 4180.			
24th STREET			
ALAMEDA AVENUE			
WENDELL H. ANNON, CIVIL ENGINEER			
SUBMITTED BY: <i>Wendell H. Annon</i>	DATE: Sept 25 1922	REFERENCE:	DRAWING NO.
APPROVED: <i>W.H.A.</i>		CITY ENGINEER	2136
REGISTERED CITY ENGINEER NO. 2066	CHECKED BY:		SHEET 3 OF 3 SHEETS

STREET

ALAMEDA AVENUE

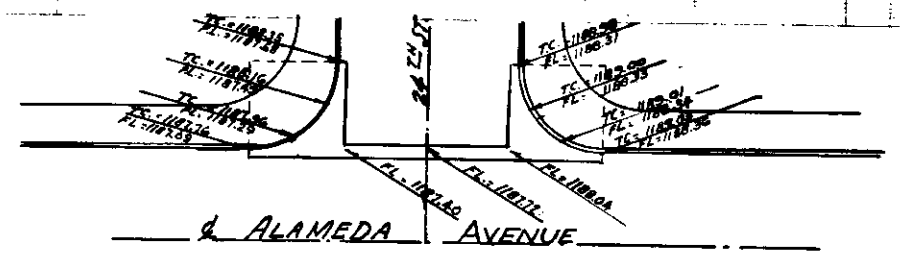
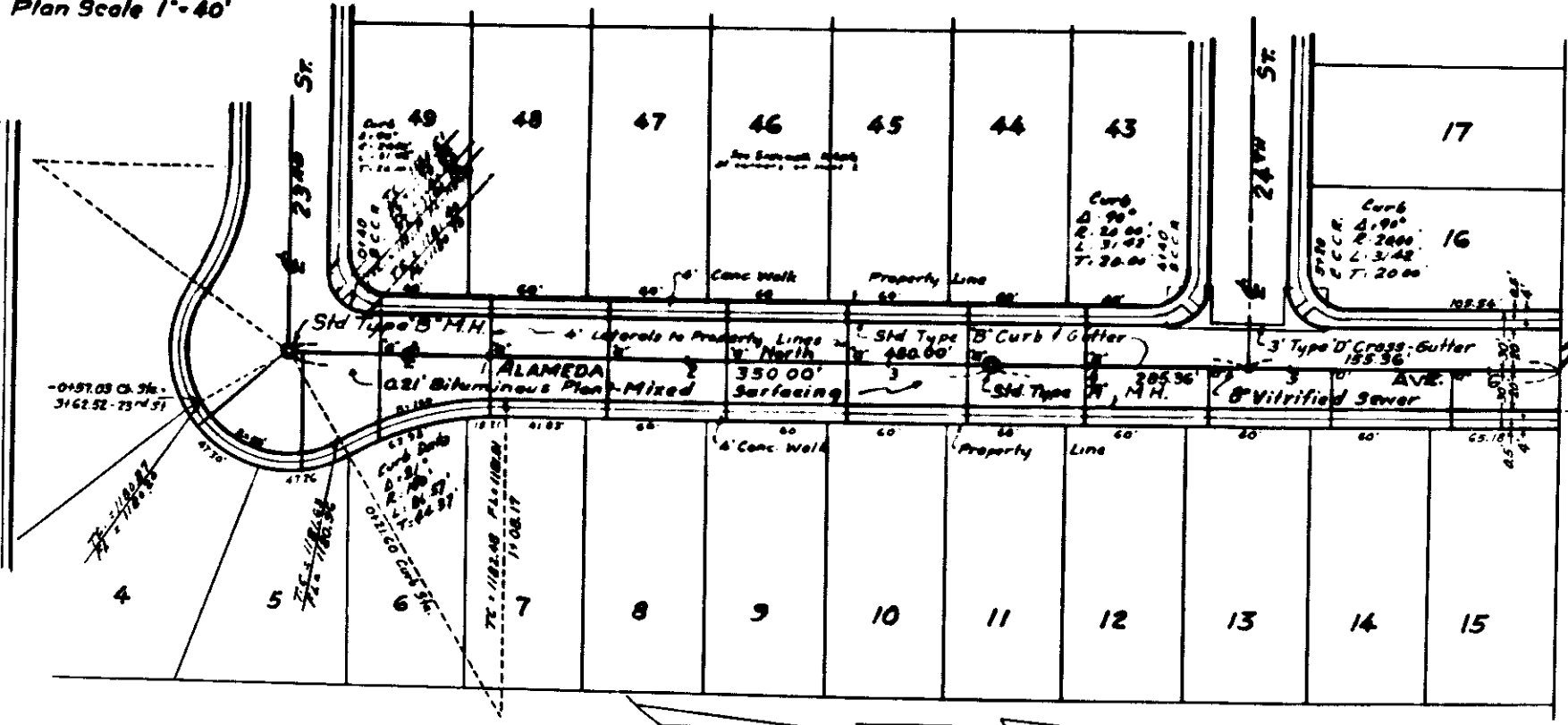
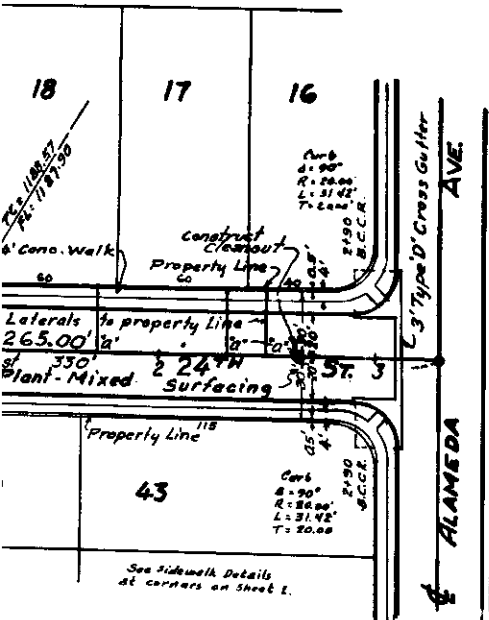
Profile Scales
Hor. 1" = 40'
Ver. 1" = 4'



BENCH MARK
R.R. Spike & 27th St. & Golden Ave.
Elev. 1203.00 City Datum

Note:
"All work embodied on these plans shall be done in conformity with the applicable provisions of specifications No. 2027."
For Typical Cross-Section See Sheet 2.

Plan Scale 1" = 40'



Curb & Gutter Details
24th and ALAMEDA AVENUE
Scale 1 inch = 20'

DEPARTMENT OF ENGINEERING	
CITY OF SAN BERNARDINO	
IMPROVEMENT PLANS - TRACT 4180.	
24th STREET	
ALAMEDA AVENUE	
WENDELL H. ANNON, CIVIL ENGINEER	
SUBMITTED BY: <i>Wendell H. Annon</i>	REFERENCE
APPROVED: <i>Sept 25 1952</i>	DRAWN BY: <i>2136</i>
CITY ENGINEER	CHECKED BY:
REGISTERED CITY ENGINEER NO. 7066	SHEET 3 OF 3 SHEETS